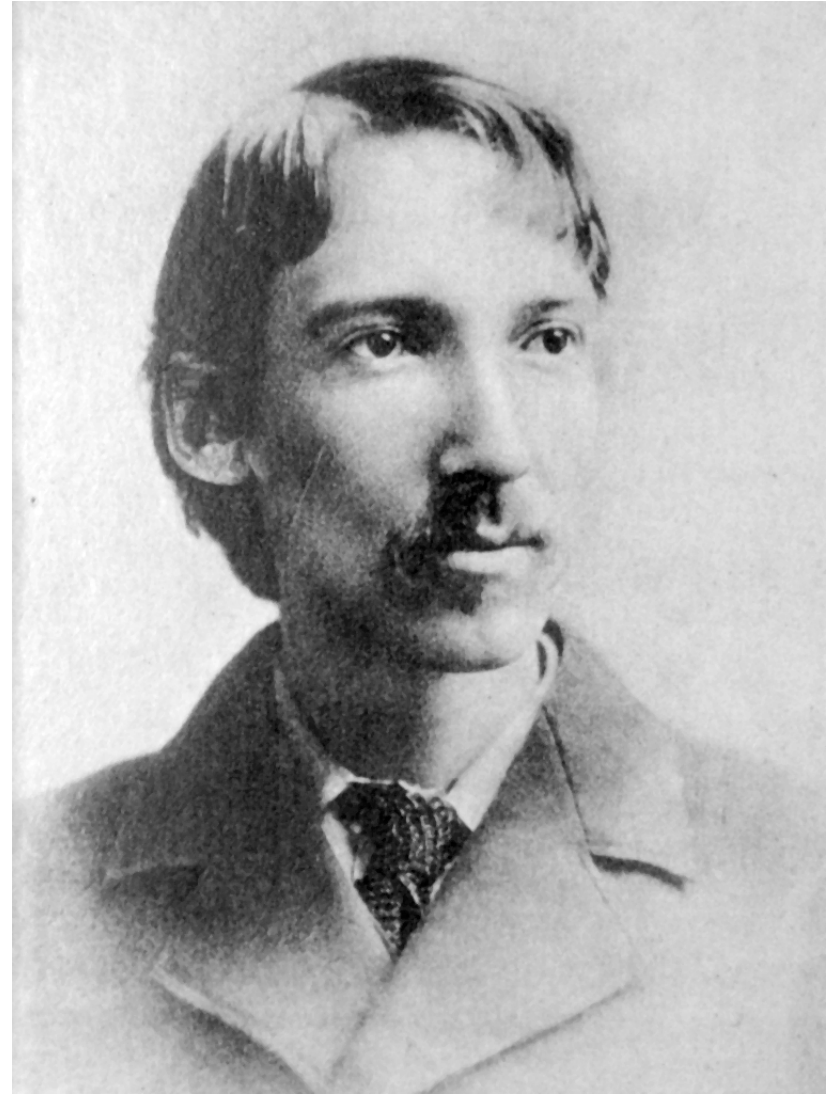




Keeper Emily Fish



Robert Louis Stevenson

Emily Fish (1893 - 1914)

Emily arrived at the lighthouse in 1893. She had lived an amazing life with her husband but was widowed at age 48. Her son-in-law helped get her appointed keeper at Point Pinos at age 50. She was active and well-liked in the community. She was keeper when the 1906 earthquake hit, damaging the lens and weakening the tower of the lighthouse. The lens was sent out for repair and the tower was repaired and reinforced. Emily was also keeper when the "eclipser" was installed in 1912, giving the light its own signature. She retired in 1914 and lived out her life in Pacific Grove. When the city began showing the lighthouse it was unfurnished. The Adobe Chapter of the International Questers, in keeping with their mission to preserve and restore historic buildings, selected the lighthouse and furnished it as it might have looked when Emily was there.

From the Timeline:

- Pressurized Kerosene
- Eclipser
- Toilet Paper
- Indoor Outhouse
- City Water
- Brick Oil House
- Model T
- Paved Road to PG



Robert Louis Stevenson b1850-d1894

Wrote Treasure Island while in Monterey, visited our lighthouse in 1879

“Westward is Point Pinos, with a lighthouse in the wilderness of sand, where you will find the light-keepers playing the piano, making models and bows and arrows, studying dawn and sunrise in amateur oil-painting, and with a dozen other elegant pursuits and interests to surprise his brave, old country rivals.”

