

Table with 4 columns: NAME OF CHANNEL, DEPTH, DATE OF SURVEY, and PROJECT NUMBER. It lists various channels such as 'SANTA CRUZ CHANNEL' and 'MOSS LANDING CHANNEL' with their respective depths and survey dates.

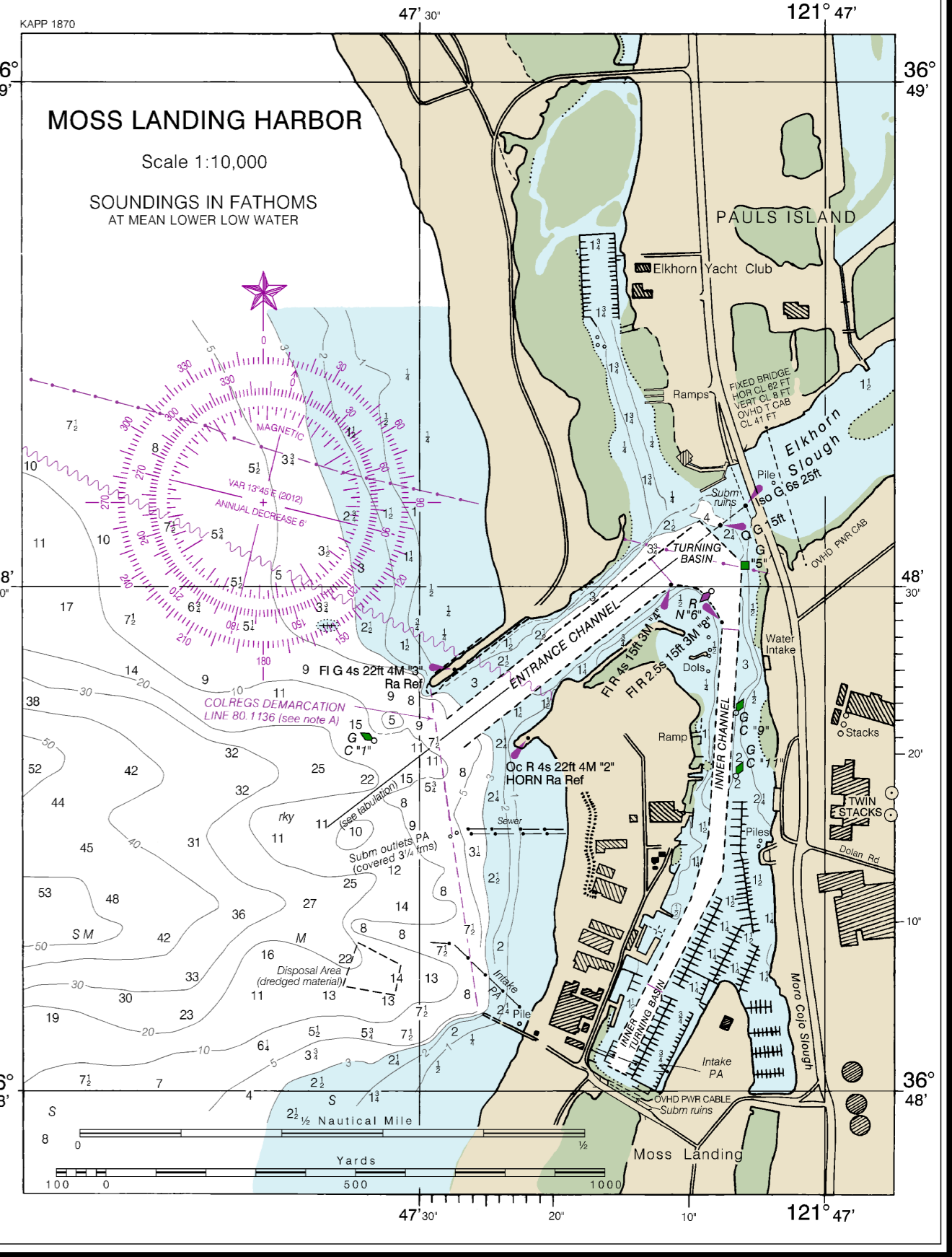
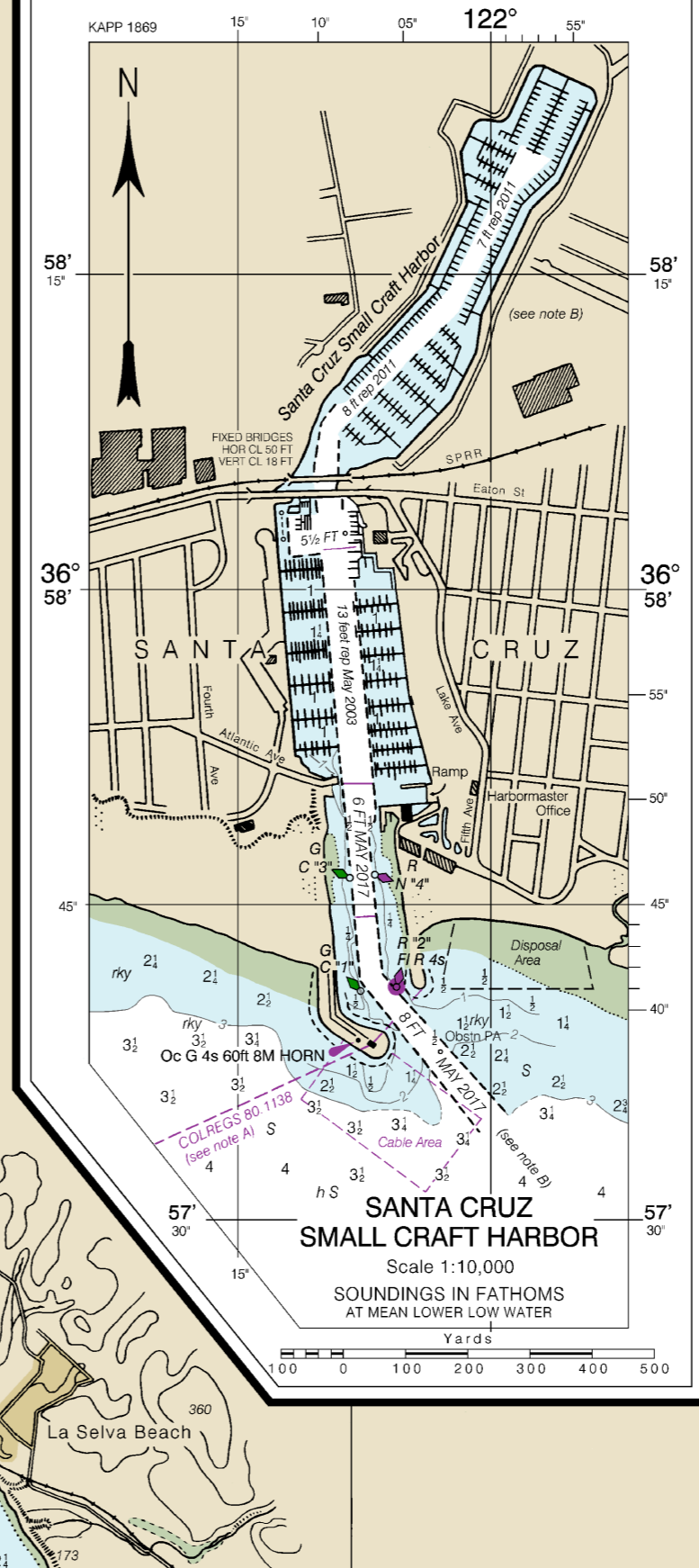


Table with 4 columns: NAME, PLACE, DATE, and DEPTH. It lists various navigational aids such as 'Moss Landing Light' and 'Santa Cruz Light' with their locations and depths.

ABBREVIATIONS - For complete list of Symbols and Abbreviations, see Chart No. 1. This chart contains the following abbreviations:

NOTE A - Navigation regulations are contained in Chapter 2, U.S. Coast Pilot 7. Additional regulations for the Monterey Bay area are contained in the Monterey Bay National Marine Sanctuary (see note A).

NOTE B - Regulations for Ocean Dumping Sites are contained in 40 CFR, Parts 220-229. Additional information concerning the regulations and requirements for use of the dumping sites may be obtained from the Environmental Protection Agency (EPA), See U.S. Coast Pilot 7 for addresses of EPA offices. Dumping subsequent to the survey dates may have replaced the depths shown.

NOTE C - The outlined areas represent the limits of the most recent hydrographic survey information that has been evaluated for charting. Surveys have been conducted in the vicinity of the bay and type of survey. Charting maintained by the U.S. Army Corps of Engineers are particularly reviewed and are not shown on this diagram. Refer to Chapter 1, United States Coast Pilot.

NOTE D - The horizontal datum of this chart is the North American Datum of 1983 (NAD 83), which is based on the World Geodetic System 1984 (WGS 84). Geographic coordinates referred to the North American Datum of 1983 must be corrected an average of 0.15 arc minutes (and 3.0 feet) westward to agree with this chart.

